

Building Three

Guildford Business Park



Available now (subject to refurbishment)

Suites from 3,000 to 16,250 sq ft

Where science, technology
and commerce meet

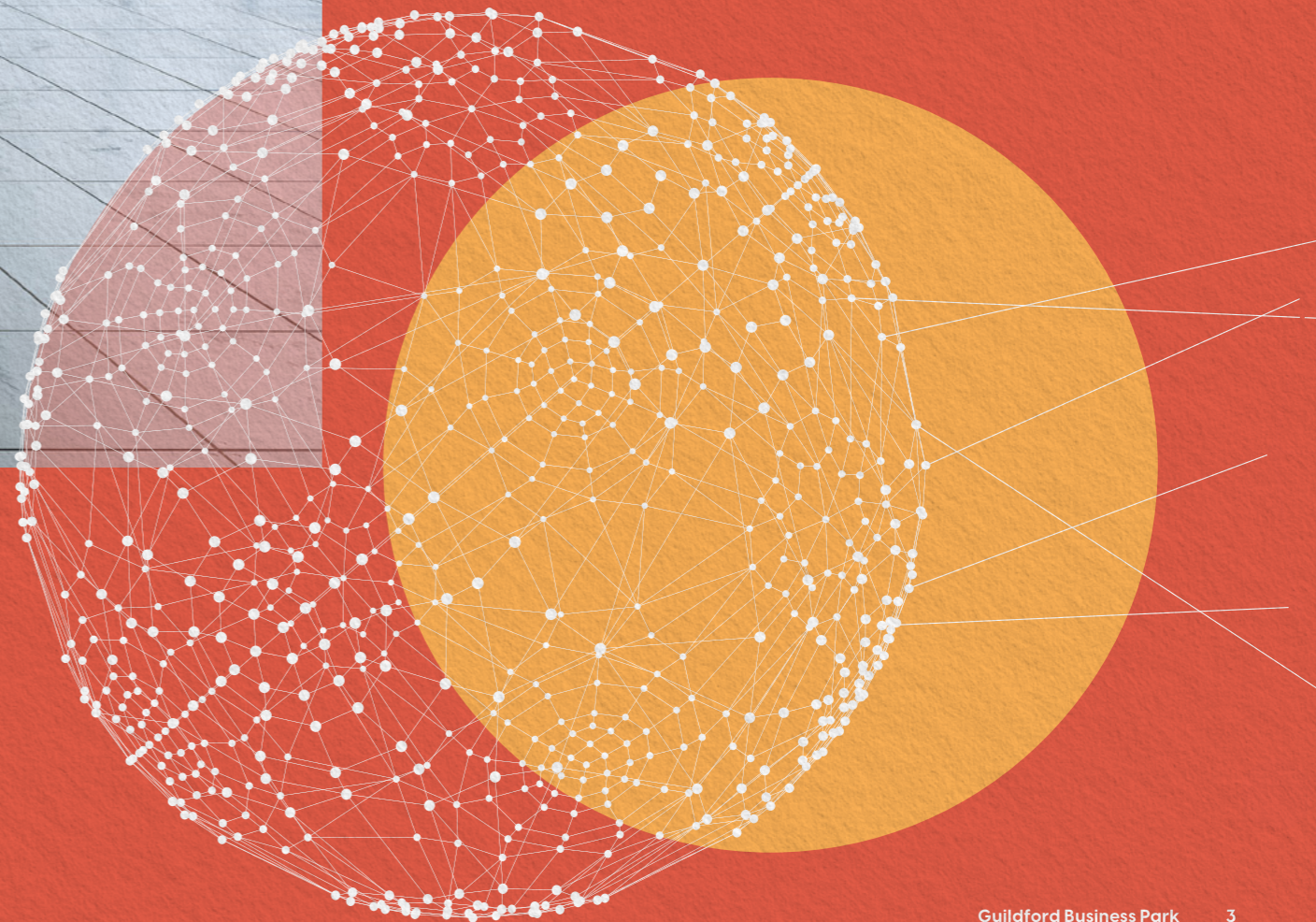

Guildford
Business Park



Inspire. Ideas.

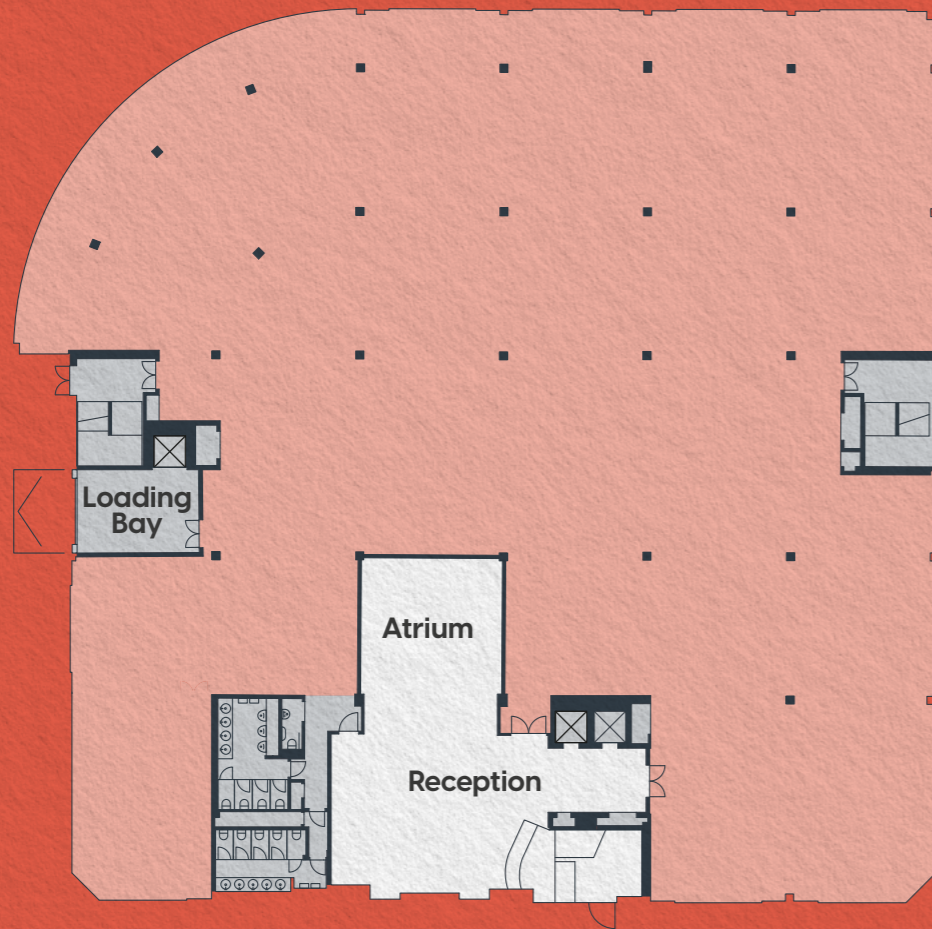
Spaces should inspire those who use them, providing an environment that stimulates ideas and connections.

indicative CGI image



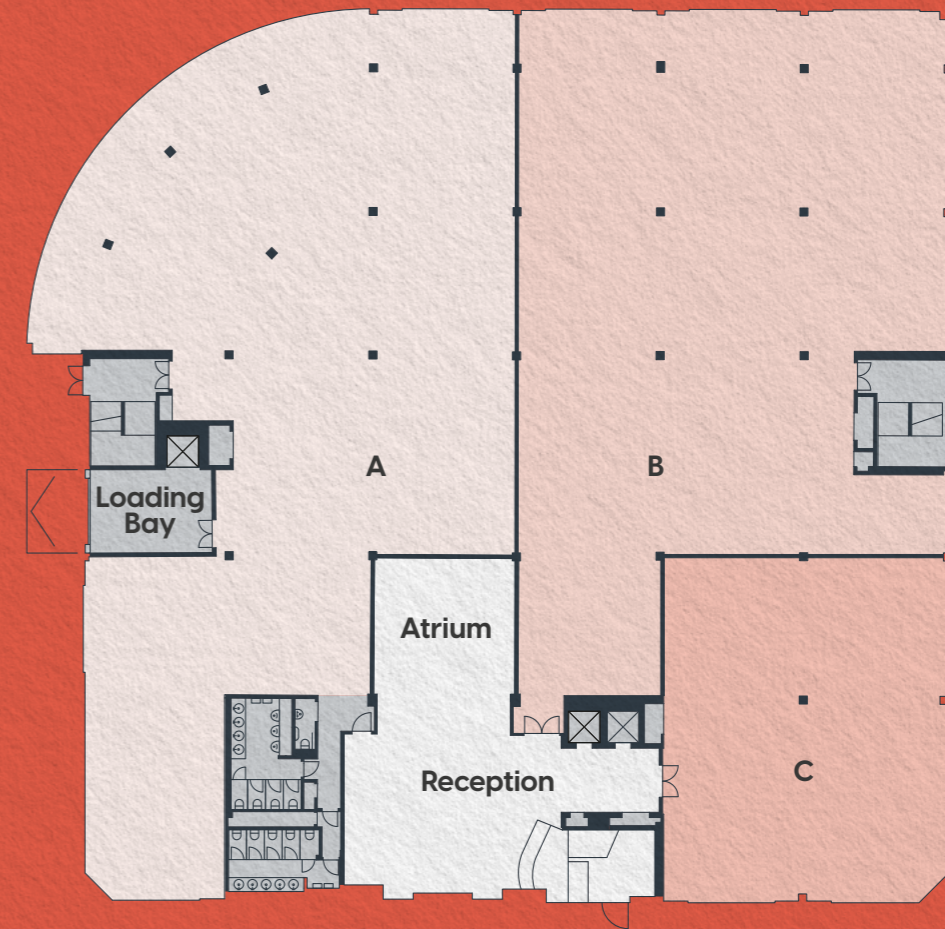
First Floor

16,250 sq ft



Potential Splits

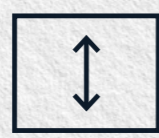
A – 7,250 sq ft B – 6,000 sq ft C – 3,000 sq ft



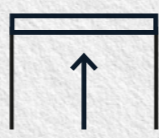
Targeting
EPC B



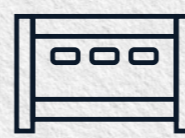
VRF heating and
cooling system



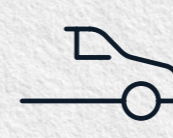
Slab-to-slab
height of 4.46m



Part exposed
suspended
ceiling



Loading
door



Car parking
ration of
1:285 sq ft



Full access raised
flooring with
Elec tracking



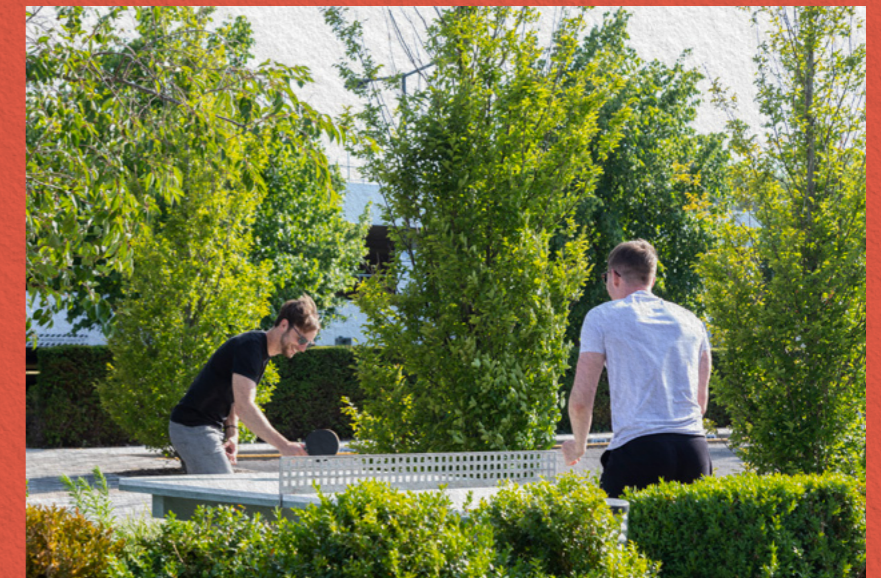
Energy
efficient LED
linear lighting



DDA WCs
and shower
facilities

GBP Spirit.

Fostering the ecosystem on GBP



Designed to offer fun and rewarding lifestyle opportunities for all tenants, Guildford Business Park provides a range of opportunities both on and off the park, from weekly sporting activities to dry cleaning, self-defence workshops and even express manicures.

Events are hosted throughout the year, including; summer BBQs, Christmas festivities and sporting themed celebrations, all taking place at the newly refurbished Caffè Kix conveniently located on the site.

Our tenants are also entitled to an exclusive privilege card which enables them to enjoy discounts and promotions at some of Britain's best loved food and retail outlets in Guildford, as well as a number of leisure and entertainment attractions.



Innovation.

On your doorstep

Guildford is home to a world-class university that provides R&D support to innovative businesses. Guildford has exceptional talent and a well-qualified, highly-skilled workforce, with proven track record of innovation and research.



The town is home to a large number of international and national occupiers including BAE Systems, Avaya, Allianz Insurance, BOC, Colgate-Palmolive, RSM, Wargaming and Electronic Arts. In addition, the University of Surrey, with its leading fields of engineering and science, attract and foster a huge number of start-up businesses such as Fox Robotics, Securium, Vidiia and Surrey Nanosystems.

The UK has the largest video game sector in Europe, with a reputation for attracting and developing world-class talent.

Guildford is a key global hub of the video gaming industry. Hailed as 'the Hollywood of video games,' the city is home to more than 70 game studios, and around 3,000 of the most skilled programmers in the world.

The industry is worth almost \$90 billion globally, and in the UK, the market reached a record £7 billion in 2020.

Video game companies located in Guildford include global leaders such as Electronic Arts, Wargaming, Ubisoft and Supermassive Games.



Current occupiers:



The Buildings

University of Surrey

Caffè Kix

Building 3

Allianz

Building 2

Wargaming UK Ltd
REGUS
Barnett Waddingham
Reed
Navien
Signify

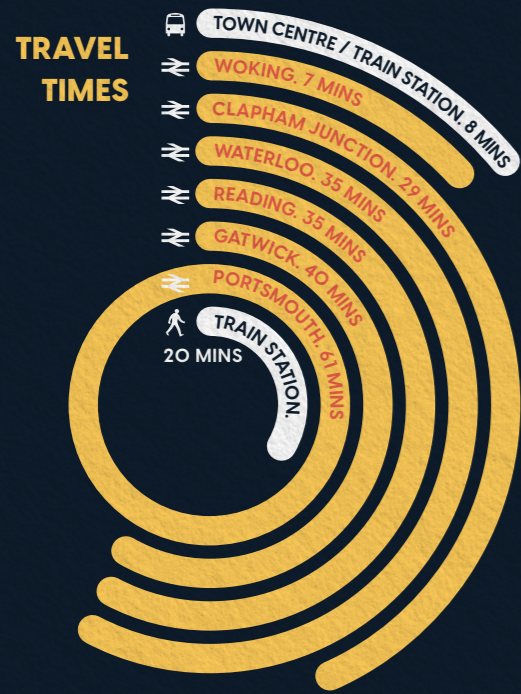
Building 1B

Future development site

Building 1A

MC2 Therapeutics

A3



Source: google.co.uk

- | | | | |
|--|--|--|--|
| <h4>Shops / Leisure</h4> <ul style="list-style-type: none"> 01 The Friary Shopping Centre 02 House of Fraser 03 The Gym 04 Ladymead Retail Park <p>Retailers include:
Argos, Carpetright,
Furniture Village, Halfords,
Next, Oak Furnitureland,
Sports Direct and Tapi</p> <ul style="list-style-type: none"> 05 Tunsgate Quarter Shopping Centre | <h4>Restaurants / Cafés</h4> <ul style="list-style-type: none"> 01 The Ivy 02 Olivo Ristorante Italiano 03 Bill's 04 Côte Brasserie 05 Positano 06 PizzaExpress 07 Wagamama 08 The Thai Terrace 09 Theion 10 Zizzi | <h4>Bars</h4> <ul style="list-style-type: none"> 01 The Boilerroom Music Venue & Bar 02 Three Pigeons 03 The Drummond 04 All Bar One 05 Five & Lime Bar | <h4>Entertainment</h4> <ul style="list-style-type: none"> 01 The Electric Theatre 02 Odeon Cinema 03 G Live Theatre 04 Guildford Spectrum Leisure Centre 05 Yvonne Arnaud Theatre |
| <h4>Hotels</h4> <ul style="list-style-type: none"> 01 Guildford Harbour Hotel 02 Premier Inn 03 Travelodge | | | <h4>Points of Interest</h4> <ul style="list-style-type: none"> 01 Guildford Museum 02 Guildford Castle |

- Town Centre & Train Station
8 minutes
- London Waterloo
35 minutes
- Heathrow Airport
31 minutes
- Gatwick Airport
40 minutes

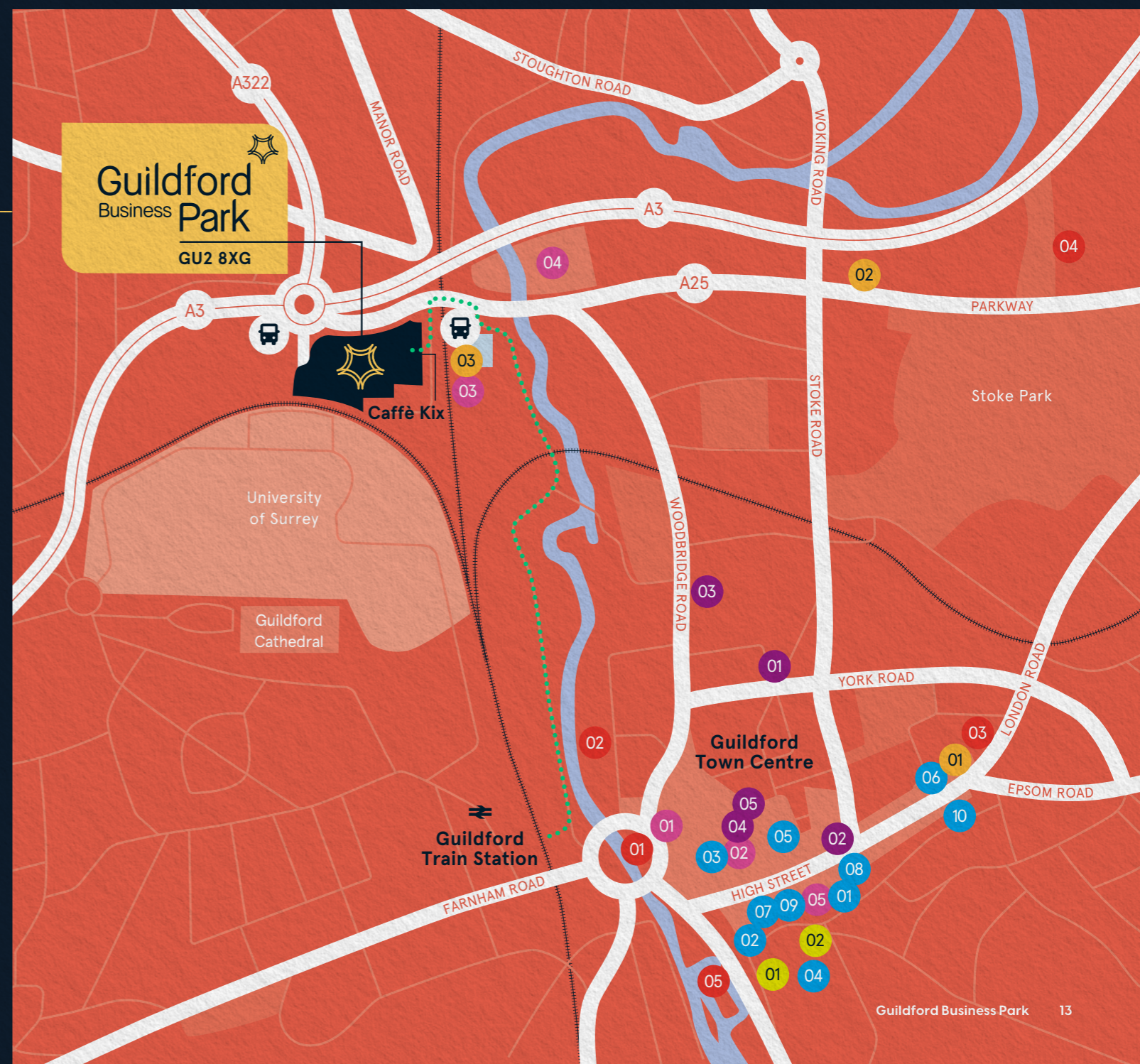
Escape Velocity. Get to where you're going at speed.

With fast access to both the rail and motorway network, Guildford Business Park is ideally located for modern businesses.

With regular trains running to London – up to 8 an hour – you are less than 40 minutes from London Waterloo as well as having direct access to Gatwick and Reading.

With the A3 on your doorstep you are only a few minutes drive from the M25, opening up the motorway network and providing easy access to both Heathrow and Gatwick airports.

The park also runs regular shuttle buses to and from the station.





guildfordbusinesspark.com

**For further information
please contact:**

**bray
fox
smith**

Simon Knight

07818 012 419

simonknight@brayfoxsmith.com

Toby Lumsden

07796 444 379

tobylumsden@brayfoxsmith.com

Bray Fox Smith for themselves and for the vendors or lessors of this property whose agents they are, give notice that – a. The particulars are set out as a general outline only for guidance and do not constitute, nor constitute part of, an offer or contract; b. All descriptions, dimensions, references to condition and necessary permissions for use and occupation, and other details are believed to be correct, but any intending purchasers, tenants or third parties should not rely on them as statements or representations of fact but satisfy themselves that they are correct by inspection or otherwise; c. No person in the employment of Bray Fox Smith has any authority to make or give any representation or warranty whatever in relation to the property; d. Any images may be computer generated. Any photographs show only certain parts of the property as they appeared at the time they were taken.